



PCORE
ELECTRIC

KV CLASS 25 kV **BIL** 150 kV **Uy** 16 kV

CURRENT RATING

1200 AMP BOTTOM CONNECTION

DWG. **CATALOG NUMBER** **GLAZE COLOR**

SD B-89211-234 BROWN

SD B-89211-234-70 LT. GRAY

DATE 2-21-12 **REV. DATE** 5-12-20

MAXIMUM ALTITUDE 10000 ft [3000 m]

NET WEIGHT 60 lb [27 kg]

ANGLE OF INCLINATION FROM THE VERTICAL 0° TO 70°

MIN. CREEP 31.00 [787.4] **MIN. STRIKE** 13.00 [330.2]

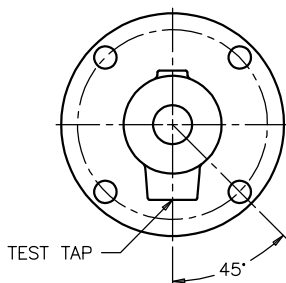
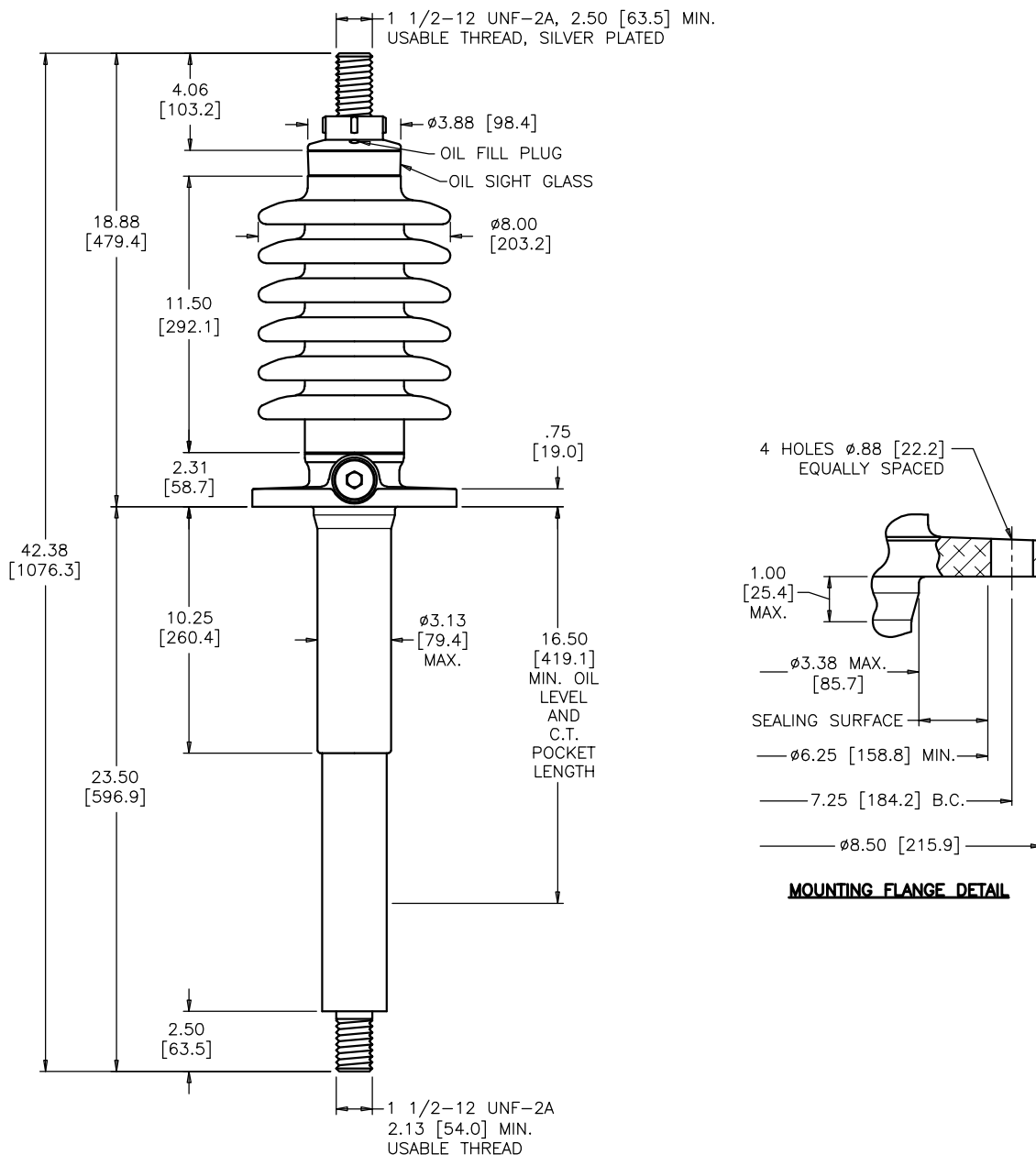
CREEP/L-G 2.15 [54.6] **STD.** IEEE C57.19.00/01

PCB CONTENT OF OIL IS LESS THAN 1 ppm

TITLE

PRC BUSHING

C₂ NAME PLATE



**FLANGE ALIGNMENT DIAGRAM
TOP VIEW**

DIMENSIONS IN INCHES [MILLIMETERS]

REVISION NET WEIGHT WAS 75 lbs, CORRECTED ROUNDING, CREEP/L-G WAS CREEP/Uy

SCALE 1/5

NOTE TO PURCHASER:
ALL SALES OF PCORE PRODUCTS ARE SUBJECT
TO OUR STANDARD TERMS AND CONDITIONS
AND THE LIMITED WARRANTIES THEREUNDER